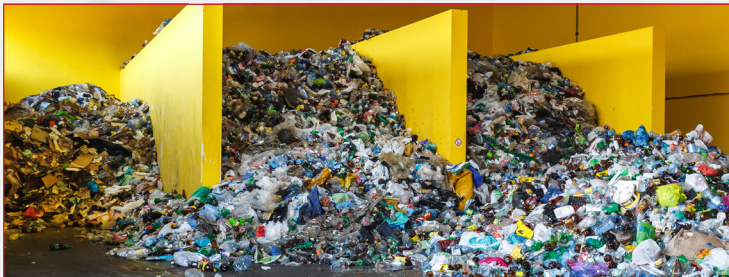


The co-processing journey

How your waste is used to make cement

1

When you dispose of waste, it is often the start of a journey at the heart of the concrete buildings you encounter every day.



2

After being deposited correctly, the waste is collected, sorted and pre-treated to remove impurities, and then processed for efficient use in cement-making.

3

During the pre-treatment, for example, used tyres are shredded to ensure maximum energy recovery. The treated waste material is then fed into cement kilns where it becomes a fuel and raw material.



Energy content

Energy recovery

Material content

Material recovery

4

This simultaneous process in the kiln sees the organic component of the waste products fuel the cement kiln, and the mineral elements of the waste become part of the cement clinker. This means that co-processing results in no leftover materials, like ash.

5

From then on, the cement is finished in the normal way and progresses further along its journey until it is used to make concrete or mortar which will help build the homes, hospitals and bridges of tomorrow.

